



Illuminated Escape Route Orientation Sign [EROS]

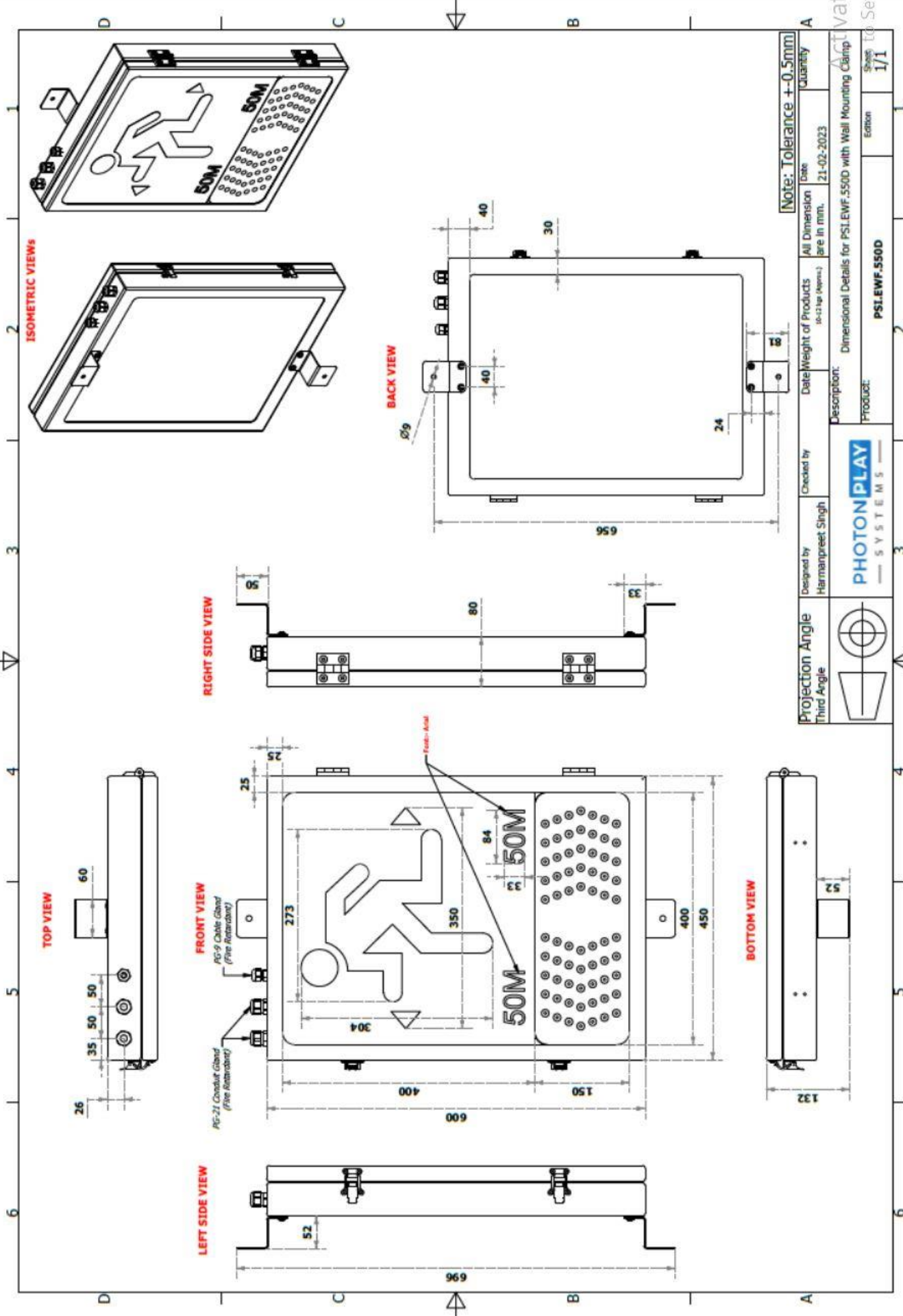
Model: PSI.EWF.550D - Fiber



1.0	TECHNICAL DETAILS	
1.1	Light source	LED
1.2	Housing	SS 2.0T (Powder Coated) Thickness- 2 mm Material: 1.4401= AISI SS316
1.3	Ingress Protection	IP65
1.4	Temperature Classes	-20°C to +85°C
1.5	Humidity Range	5 – 95% rel. humidity
1.6	Mounting options	Custom Wall (2 x M8 x 65/85 mm Fasteners) SS Grade, Seismic
1.7	Color	White
1.8	Image Plate Material	3mm Acrylic Glass
1.9	Health Status	Device health status feedback
1.10	IK Rating	08
1.11	Driver	Meanwell / Omron/ Equivalent

PHOTONPLAY SYSTEMS (P) LTD.

Director



Quantity	Date	All Dimension are in mm.	Checked By	Designed By	Projection Angle	Third Angle
1/1	21-02-2023		Harmanspreet Singh	Harmanspreet Singh		
PHOTONPLAY SYSTEMS Dimensional Details for PSLEWF-550D with Wall Mounting Clamp						
PSLEWF-550D Product:						

2.0	DISPLAY SPECIFICATIONS	
2.1	LED Make	SAMSUNG / Litemax/ Osram
2.2	LED Wattage	24W
2.3	Display Area	400 x 400 x 80 (hXwXd) Static Emergency icon 150 x 400 x 80 (hXwXd) Dynamic Flashing arrows
2.4	Display Design	Emergency icon (Single side) Flashing arrows (Right & Left)
2.5	LED Operation	Flashing(LEDs with 5 Arrows for each direction)
2.6	Weight	10-12kgs Approx.
2.7	Luminance	≥ 200 cd/m2

3.0	ELECTRICAL SPECS	
3.1	Power Supply	230VAC 50/60 HZ (+-10%)
3.2	Typical power consumption	24W (Max)
3.3	Interfaces	Optic Fiber (2-Channels)
3.4	Controller	Embedded controller designed for industrial Purpose
3.5	Operational Modes	Optic Fiber connection
3.6	life span	75,000 hours
3.7	Surge Protection	2.5Kv
3.8	Cabling	SINGLE MODE ARMOURED FIBER OPTIC CABLE (SM2) - Optic Fiber (IN), Optic Fiber (OUT) 3 CORE 2.5 Sq.mm LSZH, Cu, Fire Retardant Flexible Cable (wire with 600 mm length provided For T-74/T-77 Tunnel)
3.9	Protection Class	Class II
3.10	Conduits/Glands	Fire Retardant Single compression glands x 1 (AC POWER) Fire Retardant Single compression glands x 2 (FIBER Cable)

PHOTONPLAY SYSTEMS (P) LTD.



Director