



## Emergency Telephone Sign

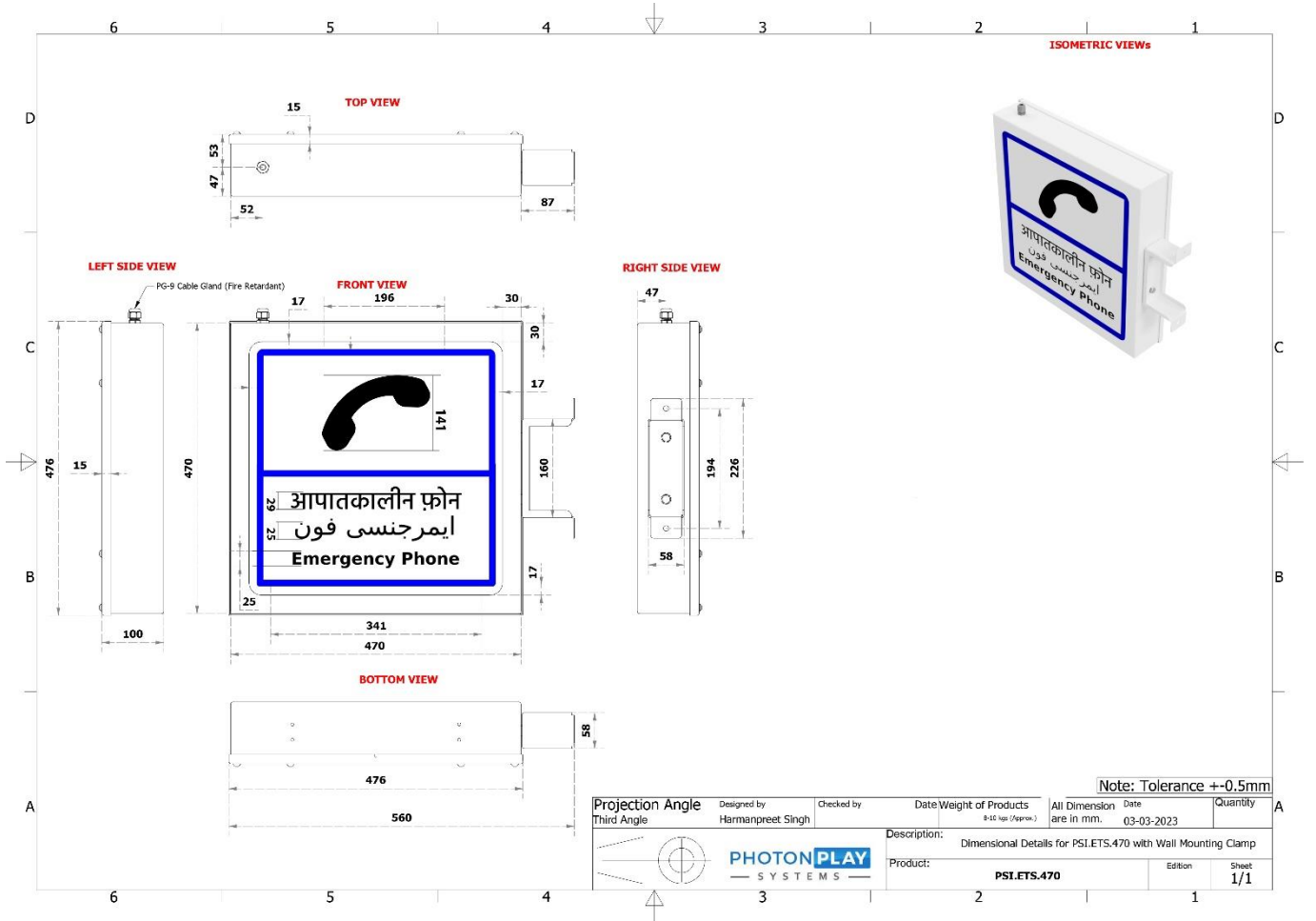
Model: PSI.ETS.470



1.0	TECHNICAL DETAILS	
1.1	<b>Light source</b>	LED
1.2	<b>Housing</b>	SS 2.0T (Powder Coated) Thickness – 2 mm Material: 1.4401= AISI SS316
1.3	<b>Ingress Protection</b>	IP65
1.4	<b>Temperature Classes</b>	-20°C to +85°C
1.5	<b>Humidity Range</b>	5 – 95% rel. humidity
1.6	<b>Mounting options</b>	Custom Wall (2 x M8 x 65/85mm Fasteners) SS Grade, Seismic
1.7	<b>Color</b>	White
1.8	<b>Image Plate Material</b>	3mm Acrylic Glass (Both side foil silk screen printed)
1.9	<b>IK Rating</b>	08
1.10	<b>Driver</b>	Meanwell / Omron/ Equivalent


PHOTONPLAY SYSTEMS (P) LTD.

Director



2.0	DISPLAY SPECIFICATIONS	
2.1	LED Make	Litemax / Samsung/Osram
2.2	LED Wattage	24W
2.3	Overall Cabinet Size	470 (L) x 470 (H) x 100 (W) MM
2.4	Display Design	Emergency Telephone icon (Both Sides) Font Size 1-1.5"
2.5	LED Operation	Static
2.6	Weight	8-10kgs Approx.
2.7	Luminance	≥ 200 cd/m2

3.0	ELECTRICAL SPECS	
3.1	Power Supply	230VAC 50/60 HZ (+-10%)
3.2	Typical power consumption	24W (Max)
3.3	life span	75,000 hours
3.4	Surge Protection	2.5Kv
3.5	Cabling	3 CORE 2.5 Sq.mm LSZH, Cu, Fire Retardant Flexible Cable (wire with 600 mm length provided For T-74/T-77 Tunnel)
3.6	Protection Class	Class II
3.7	Conduits/Glands	Fire Retardant Single compression glands x 1(AC POWER)

PHOTONPLAY SYSTEMS (P) LTD.  
  
 Director